

Guitar 3

Brandenburg Concerto No. 3

First Movement

J.S. Bach

8

6

11

15

19

22

26

30

33

Musical staff 33, starting with a treble clef, a key signature of one sharp (F#), and a common time signature (C). The staff contains a continuous eighth-note melody.

36

Musical staff 36, continuing the melody with some rests and eighth-note patterns.

40

Musical staff 40, featuring a mix of eighth and sixteenth notes.

43

Musical staff 43, showing a continuation of the eighth-note melody.

47

Musical staff 47, with some rests and eighth-note patterns.

51

Musical staff 51, continuing the eighth-note melody.

55

Musical staff 55, featuring a mix of eighth and sixteenth notes.

59

Musical staff 59, with some rests and eighth-note patterns.

63

Musical staff 63, ending with a double bar line and a fermata. A '2' is written below the staff, indicating a second ending.

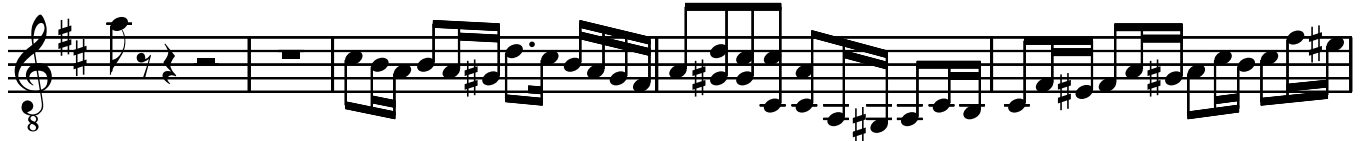
66



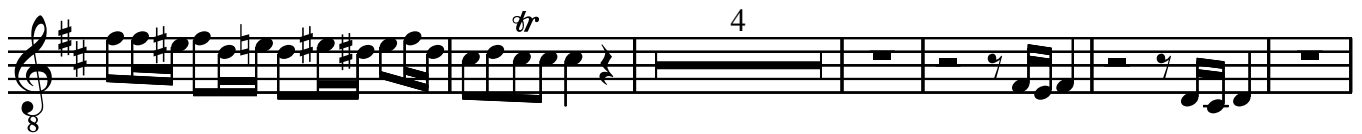
69



72



77



87



90



94



99



103



106



109



113



117



121



125



129



134

